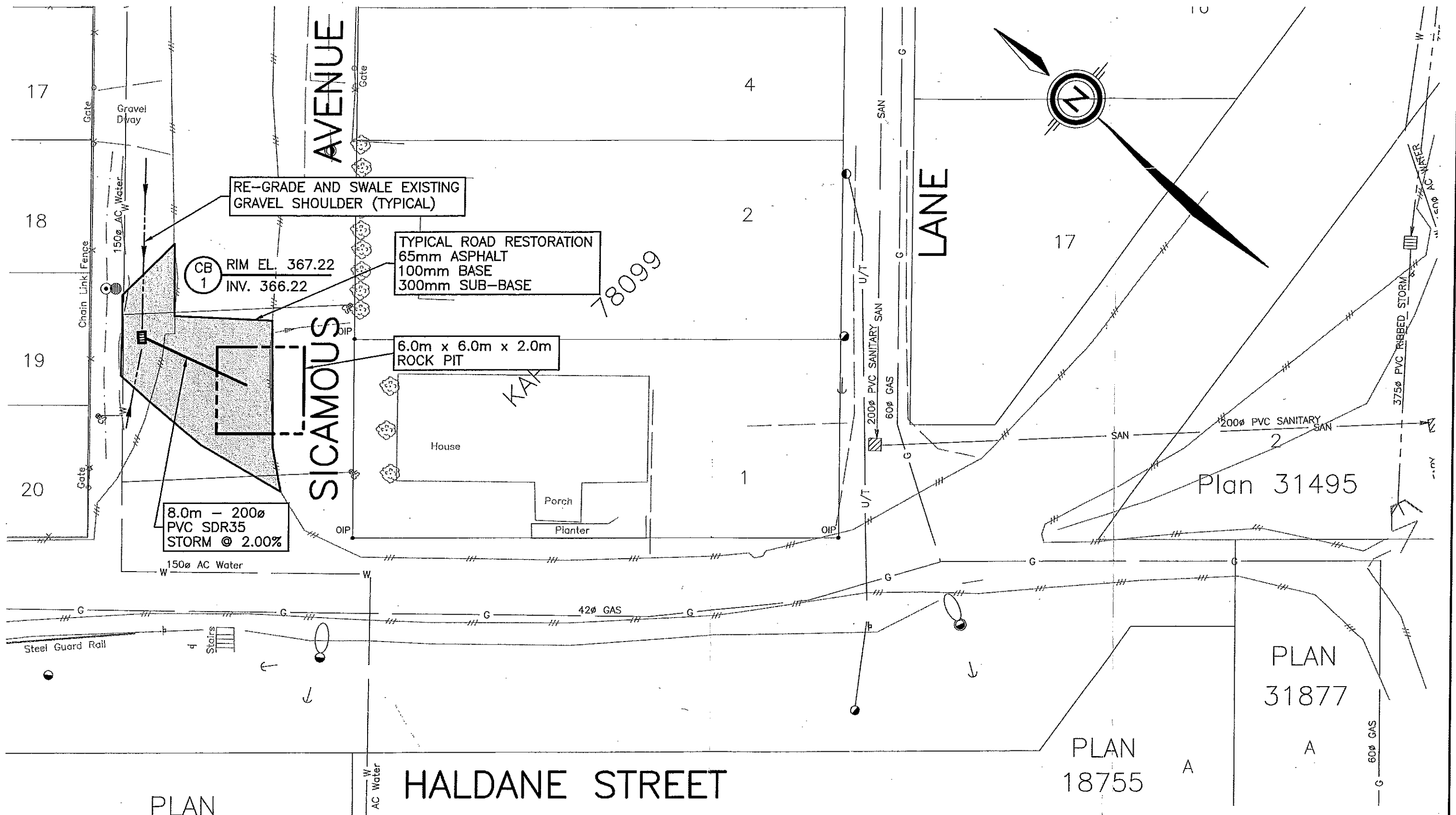
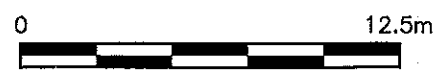


PLOT March 24, 2014 COMPUTER-C-C:\PROJECTS\CHASE\C14-1506 SICAMOUS STORM DRAWINGS\1506 U-2.DWG (XREF-DWG-NAMES)
 COPYRIGHT RESERVED. THIS DESIGN AND PLAN IS AND AT ALL TIMES REMAINS THE PROPERTY OF GENTECH ENGINEERING INC. IT MAY NOT BE USED OR REPRODUCED IN WHOLE OR IN PART WITHOUT GENTECH ENGINEERING INC. CONSENT.



PLAN
 19733
 Rem Pcl. Z.

HALDANE STREET



GENTECH ENGINEERING INC.		CIVIL ENGINEERING (250) 832-7862	
Drawn	JLA	SICAMOUS AVENUE & HALDANE ST. STORM DRAINAGE OPTIONS CHASE, B.C.	
Date	MAR 24, 2014		
Scale	1:250	STORM DRAINAGE OPT-2	

No.	Date	Description	By	App'd
Revisions				
Project No.		Dwg. No.	REV.	
C14-1506		U-2	-	

VILLAGE OF CHASE
MARCH 2014
OPINION OF PROBABLE COST
SICAMOUS AVENUE & HALDANE STORM DRAINAGE
OPTION 1 - CATCH BASIN AND PIPE

SCHEDULE OF APPROXIMATE QUANTITIES AND UNIT PRICES
(*Denotes Nominal Quantity)

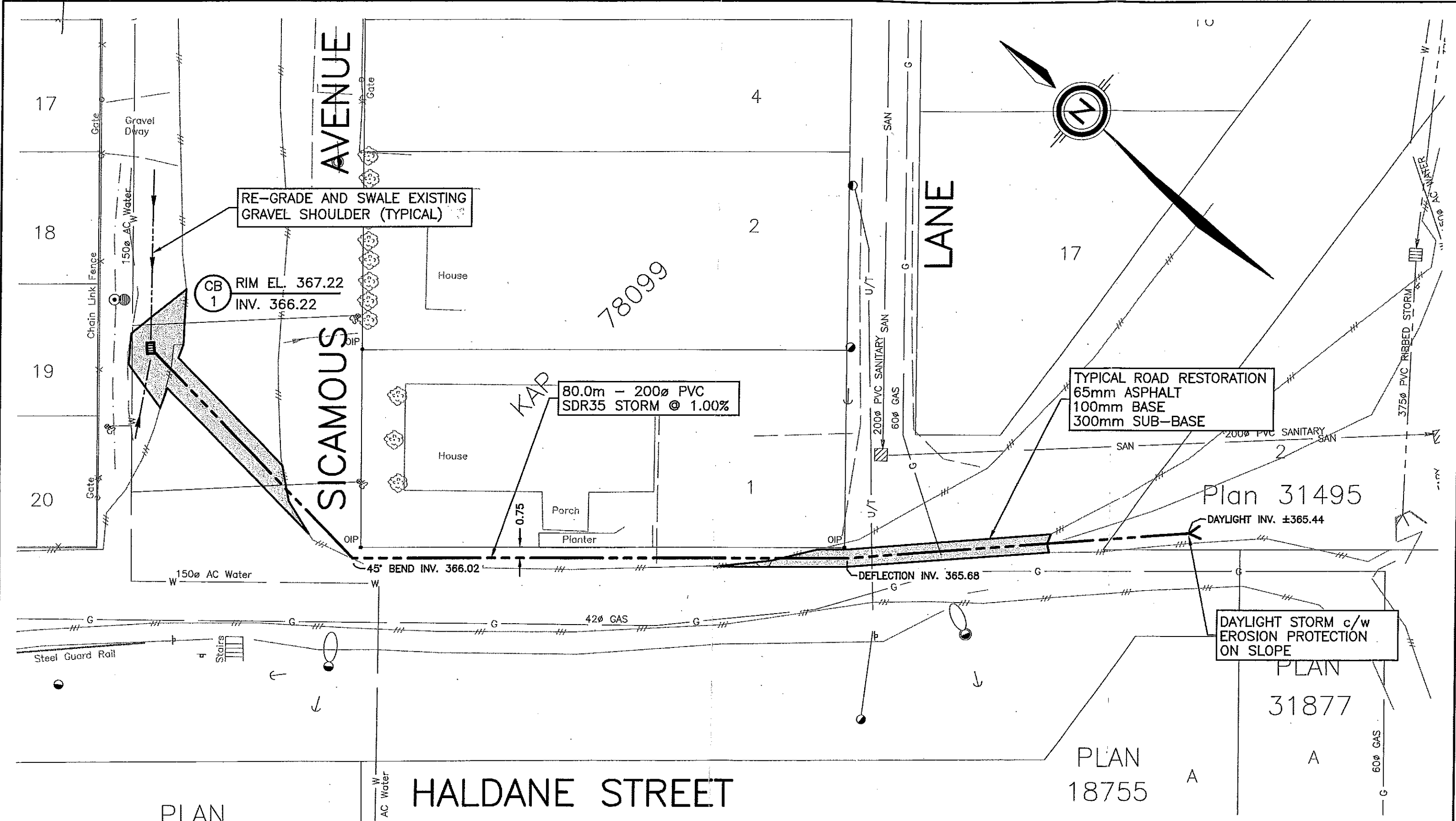
ITEM NO.	DESCRIPTION OF WORK	UNIT	QUANTITY	UNIT PRICE \$	AMOUNT \$
1.0	ROADS AND EARTHWORKS				
1.1	Asphalt Removal & Disposal.	m2	70 *	\$ 10.00	\$ 700.00
1.2	Excavation Common & Disposal	m3	35 *	\$ 12.00	\$ 420.00
1.3	Select Granular Sub-Base (SGSB) Aggregate.	m3	35 *	\$ 45.00	\$ 1,575.00
1.4	Crushed Base Course (CBC) Well Graded Aggregate.	m3	12 *	\$ 70.00	\$ 840.00
1.5	65mm Class 2 Medium Mix Asphalt Pavement.	m2	70 *	\$ 30.00	\$ 2,100.00
1.6	Supply & Install Shouldering	m3	5 *	\$ 100.00	\$ 500.00
	Sub-total: Roads and Earthworks				\$ 6,135.00
2.0	STORM SEWER WORKS				
2.1	Supply & Install 200ø PVC (SDR35) Storm, complete with Bends.	m	80 *	\$ 100.00	\$ 8,000.00
2.2	Catch basin	ea	1 *	\$ 1,300.00	\$ 1,300.00
2.3	Regrade Existing Ditch	m	20 *	\$ 35.00	\$ 700.00
	Sub-total: Storm Sewer Works				\$ 10,000.00

C14-1506

OPINION OF PROBABLE COST
 SICAMOUS AVENUE & HALDANE STORM DRAINAGE
 OPTION 1 - CATCH BASIN AND PIPE

ITEM NO.	DESCRIPTION OF WORK	TOTAL \$	
SUMMARY			
1.0	ROADS AND EARTHWORKS	\$	6,135.00
2.0	STORM SEWER WORKS	\$	10,000.00
	SUB-TOTAL	\$	16,135.00
	GST @ 5%	\$	806.75
	TOTAL	\$	16,941.75 ^{1,2,3,4,5}
<p>*Opinion of Probable Cost Notes</p> <p>1) Prices do not include Hydro, Tefus, Gas, Legal Survey (BCLS) and property/right-of-way acquisitions.</p> <p>2) Prices do not include Geotechnical, Environmental and Archaeological studies, reviews and approvals.</p> <p>3) Quantities may vary depending on field revisions and/or conditions encountered at the time of construction, thereby affecting the final cost.</p> <p>4) Unit Prices are estimated in 2014 Canadian Dollars for similar works and exclude taxes.</p> <p>5) Unit Prices are influenced by supply and demand for both contractors and materials at the time of construction, thereby affecting the final cost.</p>			

PLOT: March 24, 2014. COMPUTER-C-C:\PROJECTS\CHASE\C14-1506 SICAMOUS STORM DRAWINGS\1506 U-1.DWG (XREF-DWG-NAMES)
 COPYRIGHT RESERVED. THE DESIGN AND PLAN IS AND AT ALL TIMES REMAINS THE PROPERTY OF GENTECH ENGINEERING INC. IT MAY NOT BE USED OR REPRODUCED IN WHOLE OR IN PART WITHOUT GENTECH ENGINEERING INC. CONSENT.



PLAN
 19733
 Rem Pcl. Z.

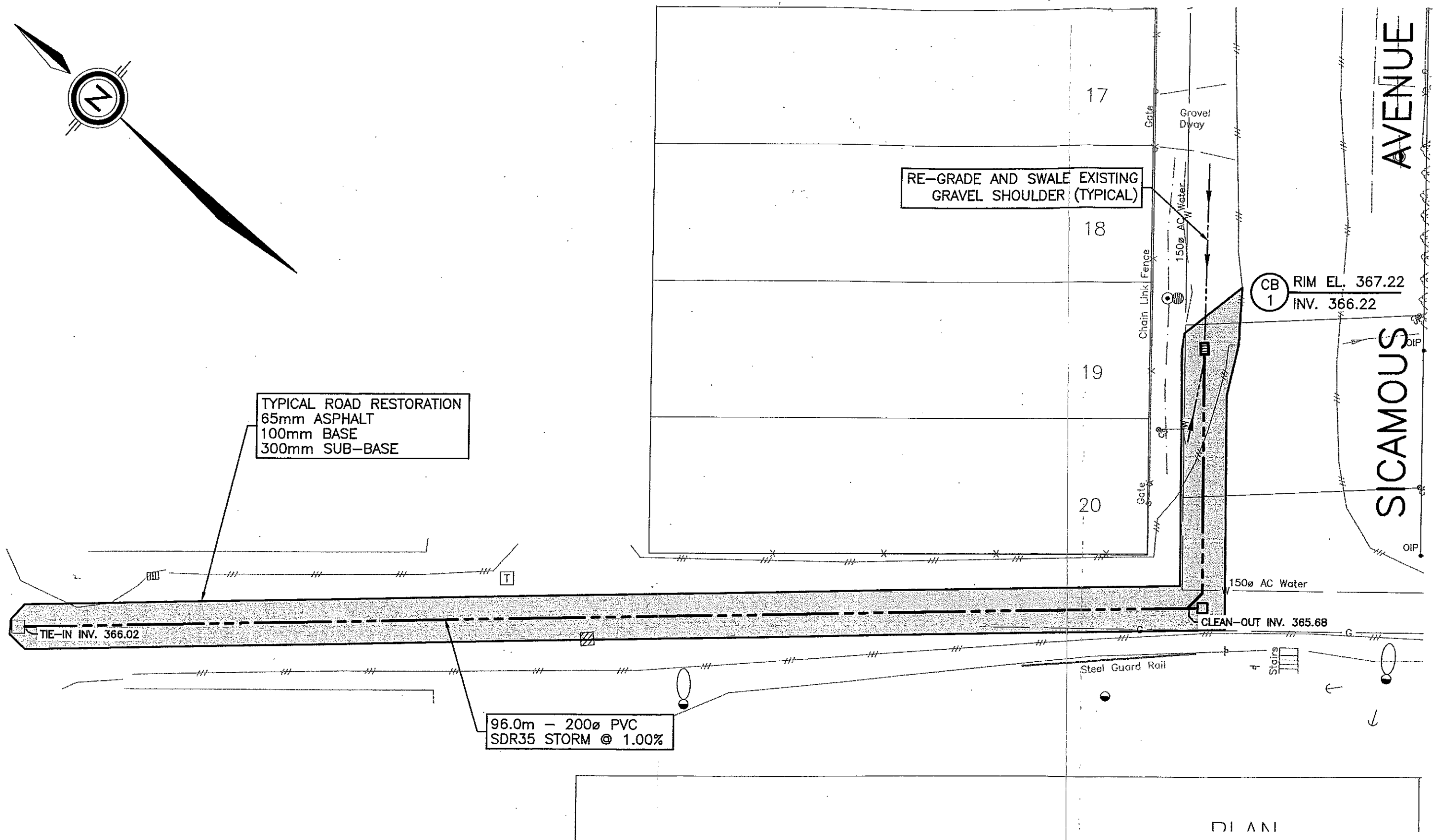
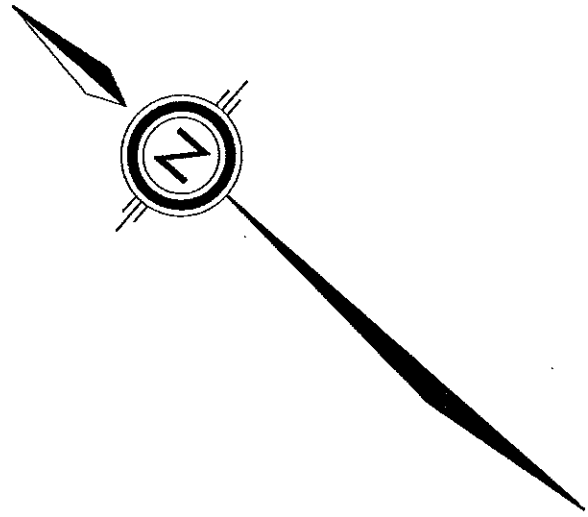


GENTECH ENGINEERING INC. CIVIL ENGINEERING (250) 892-7662					
Drawn	JLA	SICAMOUS AVENUE & HALDANE ST. STORM DRAINAGE OPTIONS CHASE, B.C.			
Date	MAR 24, 2014	No.	Date	Description	By App'd
Scale	1:250	Revisions			
STORM DRAINAGE OPT-1		Project No.	Dwg. No.	REV.	
		C14-1506	U-1	-	

25

PLOT March 25, 2014 COMPUTER-C-C:\PROJECTS\CHASE\C14-1506 SICAMOUS STORM DRAWINGS\1506 U-3.DWG (XREF-DWG-NAMES)
 COPYRIGHT RESERVED. THIS DESIGN AND PLAN IS AND AT ALL TIMES REMAINS THE PROPERTY OF GENTECH ENGINEERING INC. IT MAY NOT BE USED OR REPRODUCED IN WHOLE OR IN PART WITHOUT GENTECH ENGINEERING INC. CONSENT.

SHUSWAP AVENUE



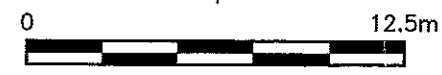
TYPICAL ROAD RESTORATION
 65mm ASPHALT
 100mm BASE
 300mm SUB-BASE

RE-GRADE AND SWALE EXISTING
 GRAVEL SHOULDER (TYPICAL)

96.0m - 200 ϕ PVC
 SDR35 STORM @ 1.00%

CB 1
 RIM EL. 367.22
 INV. 366.22

CLEAN-OUT INV. 365.68



GENTECH ENGINEERING INC. CIVIL ENGINEERING (250) 892-7862					
Drawn	JLA	SICAMOUS AVENUE & HALDANE ST. STORM DRAINAGE OPTIONS CHASE, B.C.		No.	Date
Date	MAR 25, 2014	STORM DRAINAGE OPT-3		Description	
Scale	1:250			By	App'd
				Revisions	
		Project No.	Dwg. No.	REV.	
		C14-1506	U-3	-	

AVENUE

SICAMOUS

DI ANI

VILLAGE OF CHASE
MARCH 2014
OPINION OF PROBABLE COST
SICAMOUS AVENUE & HALDANE STORM DRAINAGE
OPTION 3 - CATCH BASIN AND PIPE TO SHUSWAP
SCHEDULE OF APPROXIMATE QUANTITIES AND UNIT PRICES
 (*Denotes Nominal Quantity)

ITEM NO.	DESCRIPTION OF WORK	UNIT	QUANTITY	UNIT PRICE \$	AMOUNT \$
1.0	ROADS AND EARTHWORKS				
1.1	Asphalt Removal & Disposal.	m2	300 *	\$ 10.00	\$ 3,000.00
1.2	Excavation Common & Disposal	m3	120 *	\$ 12.00	\$ 1,440.00
1.3	Select Granular Sub-Base (SGSB) Aggregate.	m3	90 *	\$ 45.00	\$ 4,050.00
1.4	Crushed Base Course (CBC) Well Graded Aggregate.	m3	35 *	\$ 70.00	\$ 2,450.00
1.5	65mm Class 2 Medium Mix Asphalt Pavement.	m2	300 *	\$ 30.00	\$ 9,000.00
1.6	Supply & Install Shouldering	m3	5 *	\$ 100.00	\$ 500.00
	Sub-total: Roads and Earthworks				\$ 20,440.00
2.0	STORM SEWER WORKS				
2.1	Supply & Install 200Ø PVC (SDR35) Storm, complete with Bends.	m	96 *	\$ 115.00	\$ 11,040.00
2.2	Catch basin	ea	1 *	\$ 1,300.00	\$ 1,300.00
2.3	Regrade Existing Ditch	m	20 *	\$ 35.00	\$ 700.00
	Sub-total: Storm Sewer Works				\$ 13,040.00

C14-1506

OPINION OF PROBABLE COST
 SICAMOUS AVENUE & HALDANE STORM DRAINAGE
 OPTION 3 - CATCH BASIN AND PIPE TO SHUSWAP

ITEM NO.	DESCRIPTION OF WORK	TOTAL \$	
SUMMARY			
1.0	ROADS AND EARTHWORKS		\$ 20,440.00
2.0	STORM SEWER WORKS		\$ 13,040.00
SUB-TOTAL			\$ 33,480.00
GST @ 5%			\$ 1,674.00
TOTAL			\$ 35,154.00 ^{1,2,3,4,5}
<p>*Opinion of Probable Cost Notes</p> <p>1) Prices do not include Hydro, Telus, Gas, Legal Survey (BCLS) and property/right-of-way acquisitions.</p> <p>2) Prices do not include Geotechnical, Environmental and Archaeological studies, reviews and approvals.</p> <p>3) Quantities may vary depending on field revisions and/or conditions encountered at the time of construction, thereby affecting the final cost.</p> <p>4) Unit Prices are estimated in 2014 Canadian Dollars for similar works and exclude taxes.</p> <p>5) Unit Prices are influenced by supply and demand for both contractors and materials at the time of construction, thereby affecting the final cost.</p>			