

VILLAGE OF CHASE

BY-LAW NO. 102

A by-law of the Village of Chase to change the zoning classification of part of that part of Lot 6, Plan 1467 as shown on Plan B7064, District Lot 517, Group 1, K.D.Y.D., except Plan 6787, from M 1 Mobile to R 1 Residential.

The Council of the Village of Chase in open meeting assembled, ENACT AS FOLLOWS:

1. The zoning classification of part of that part of Lot 6, Plan 1467 as shown on Plan B7064, District Lot 517, Group 1, K.D.Y.D., except Plan 6787 as shown outlined in red on the attached plan, is hereby changed from M 1 Mobile to R 1 Residential.
2. This by-law may be cited as, "Village of Chase Zoning Amendment By-law No. 102".

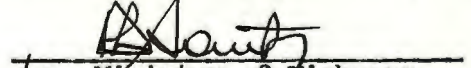
Read a first time this 10th day of January, 1974.  
 Read a second time this 24th day of January, 1974.  
 Read a third time this 24th day of January, 1974.

Presented to a public meeting of the ratepayers of the Village of Chase this 14th day of February, 1974.

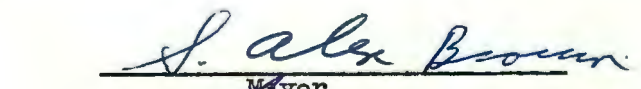
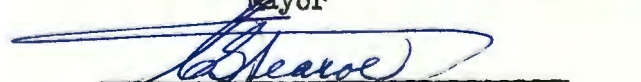
I hereby certify the foregoing to be a true and correct copy of By-law No. 102 cited as "Village of Chase Zoning Amendment By-law No. 102" as read a third time by Council on the 24th day of January, 1974.

  
 Clerk


Approved by the Minister of Highways on the 8<sup>th</sup> day of March, 1974

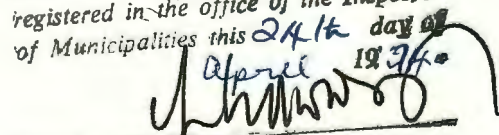
  
 for Minister of Highways

Reconsidered and adopted on the 28<sup>th</sup> day of MARCH, 1974

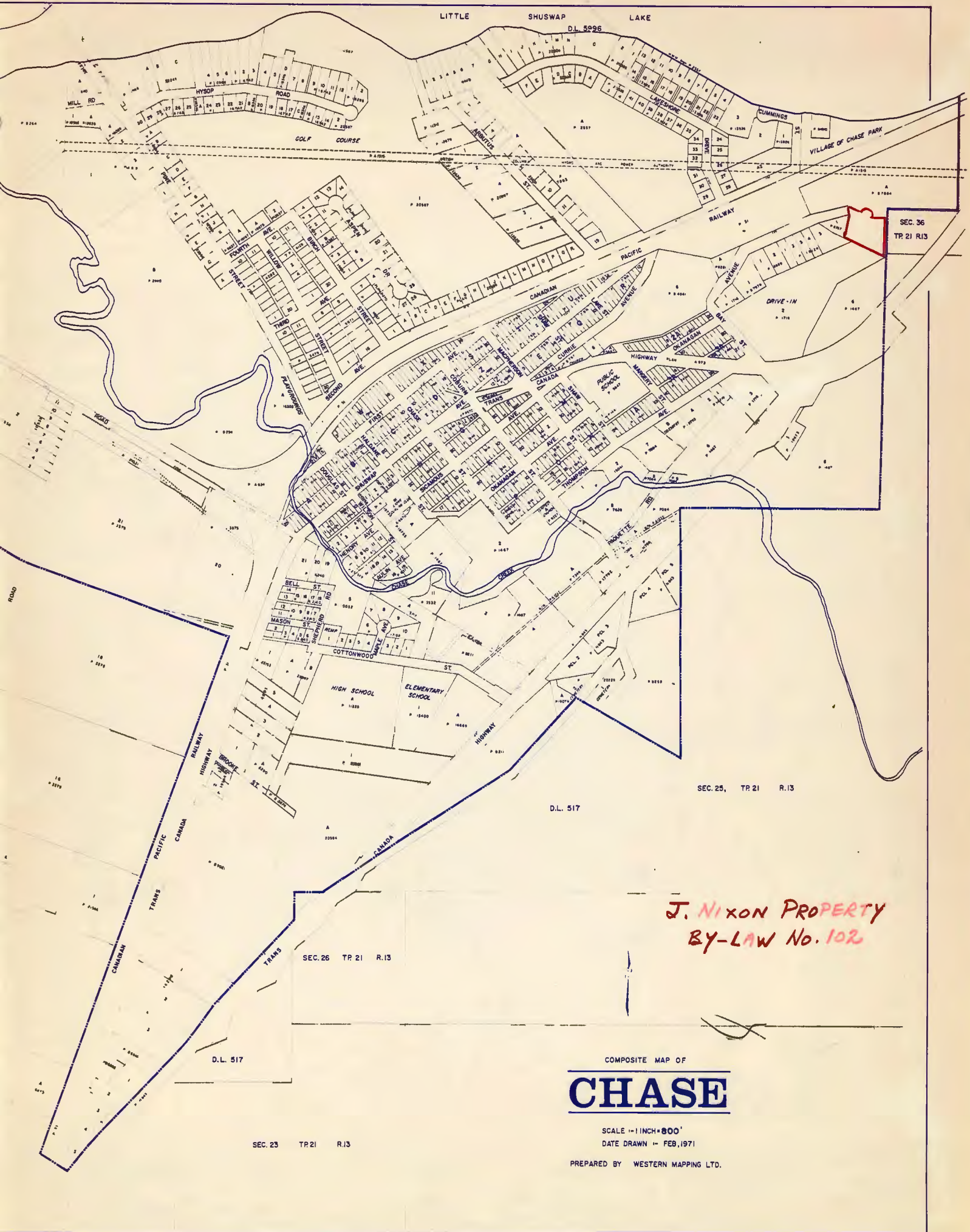
  
 Mayor  
  
 Clerk

I hereby certify the foregoing to be a true and correct copy of By-law No. 102 as adopted by Council on the 28<sup>th</sup> day of MARCH, 1974.

  
 Clerk

A true copy of By-law No. 102 registered in the office of the Inspector of Municipalities this 24th day of April 1974.  
  
 Deputy Inspector of Municipalities





SEC. 36  
TR 21 R13

SEC. 25, TR 21 R.13

D.L. 517

*J. NIXON PROPERTY  
BY-LAW No. 102*

SEC. 26 TR 21 R.13

D.L. 517

SEC. 25 TR 21 R.13

COMPOSITE MAP OF  
**CHASE**

SCALE 1" = 1100'  
DATE DRAWN - FEB, 1971

PREPARED BY WESTERN MAPPING LTD.

Plan of Subdivision of Part of  
 that Part of Lot 6, Plan 1467  
 as shown on Plan B7064, District  
 Lot 517, Group 1, K.D.V.D. Except Plan 678  
 Scale: 1 inch = 50 feet.

