

VILLAGE OF CHASE

ZONING AMENDMENT BY-LAW NO. 250, 1982

A By-law of the Village of Chase to amend the Village of Chase Zoning By-law No. 201, to change the zoning classification of Lot 3, Plan 14290, District Lot 517, K.D.Y.D. and the Southerly portion (6162m²) more or less, of Lot 2, Plan 14290, District Lot 517, K.D.Y.D. from C.3 Service Commercial District to R.4 - Mobile Home Residential District as shown outlined in red on the attached plan.

The Council of the Village of Chase, in open Meeting assembled, enacts as follows:

1. The Zoning Classification of Lot 3, Plan 14290, District Lot 517, K. D. Y. D., and the southerly portion (6162M²) more or less of Lot 2, Plan 14290, District Lot 517, K.D.Y.D. is hereby changed from C.3 Service Commercial District to R.4 Mobile Home Residential District.

2. This by-law may be cited as "Village of Chase Zoning Amendment By-law No. 250, 1982".

READ A FIRST TIME this 10th day of JUNE, 1982.

READ A SECOND TIME this 10th day of JUNE, 1982.

READ A THIRD TIME this 14th day of JUNE, 1982.

Presented at a Public Meeting of the Ratepayers of the Village of Chase this 8th day of JUNE, 1982.

Approved under the Controlled Access Highway Act this 23rd day of June, 1982.

[Signature]
Approving Officer
Ministry of Highways and Public Works

RECONSIDERED AND FINALLY ADOPTED on this 24th day of JUNE, 1982.

[Signature]
Mayor

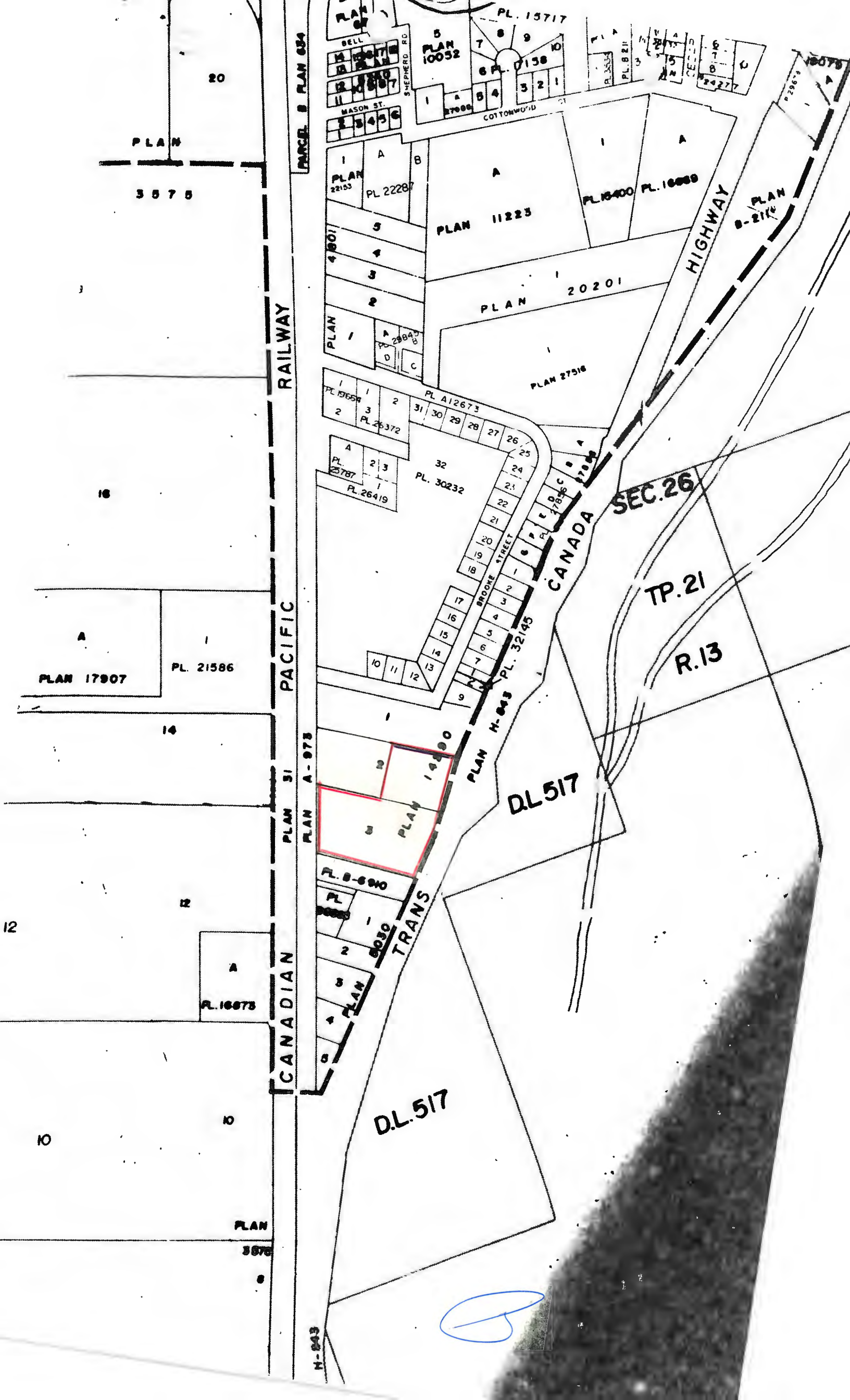
[Signature]
Clerk

I hereby certify the foregoing to be a true and correct copy of By-law No. 250, 1982, as adopted on the 24th day of JUNE, 1982.

[Signature]
Clerk

A true copy of By-Law No. 250 registered in the office of the Inspector of Municipalities this 4th day of AUGUST 1982.

[Signature]
Deputy Inspector of Municipalities



PLAN

3575

20

PARCEL B PLAN 634

PLAN 15717
PLAN 10032
PLAN 7158
MASON ST.
SHEPHERD RD.
COTTONWOOD ST.

PLAN 22153
PL 22287
PLAN 11223
PLAN 16400
PLAN 16689
PLAN 20201
PLAN 27518

HIGHWAY
PLAN 8-2170

RAILWAY
CANADIAN PACIFIC

PLAN 19659
PL 26372
PL 25787
PL 26419
PL 30232
BROOKE STREET
PLAN H-843
PL 32145

SEC. 26

TP. 21

R. 13

PLAN 17907

PL. 21586

DL 517

PLAN 31
PLAN A-973

PLAN 14990
PLAN 8-690
PLAN 8030

DL. 517

CANADIAN TRANS

PL. 16878

PLAN

3575

H-843

