

VILLAGE OF CHASE

BYLAW NO. 386

A BYLAW TO AMEND VILLAGE OF CHASE ZONING BYLAW NO. 264, 1983, BY changing the classification of part of Lot 21, Plan 3575, District Lot 517, Kamloops Division Yale District, except Plan H142 and 11242 from AR 1 Agricultural District, to M 1 Light Industrial District, as shown outlined in red on the attached map that forms a part of this bylaw as Schedule "A".

The Municipal Council of the Village of Chase, in open meeting assembled, enacts as follows:

1. The zoning classification of that part of Lot 21, Plan 3575, District Lot 517, Kamloops Division Yale District, except Plan H142 and 11242, as outlined in red on the attached map, is hereby changed from AR 1 Agricultural District, to M 1 Light Industrial District.

2. The map attached hereto as Schedule "A" is incorporated in and forms part of this bylaw.

3. This bylaw may be cited as "Village of Chase Zoning Amendment Bylaw No. 386, 1988".

READ A FIRST TIME this 12th day of January, 1989.

READ A SECOND TIME this 12th day of January, 1989.

PRESENTED AT A PUBLIC HEARING IN THE VILLAGE OF CHASE this 9th day of March, 1989.

READ A THIRD TIME THIS 23rd DAY OF March, 1989.

RECONSIDERED AND FINALLY ADOPTED this 13th day of April, 1989.

[Signature]
Mayor

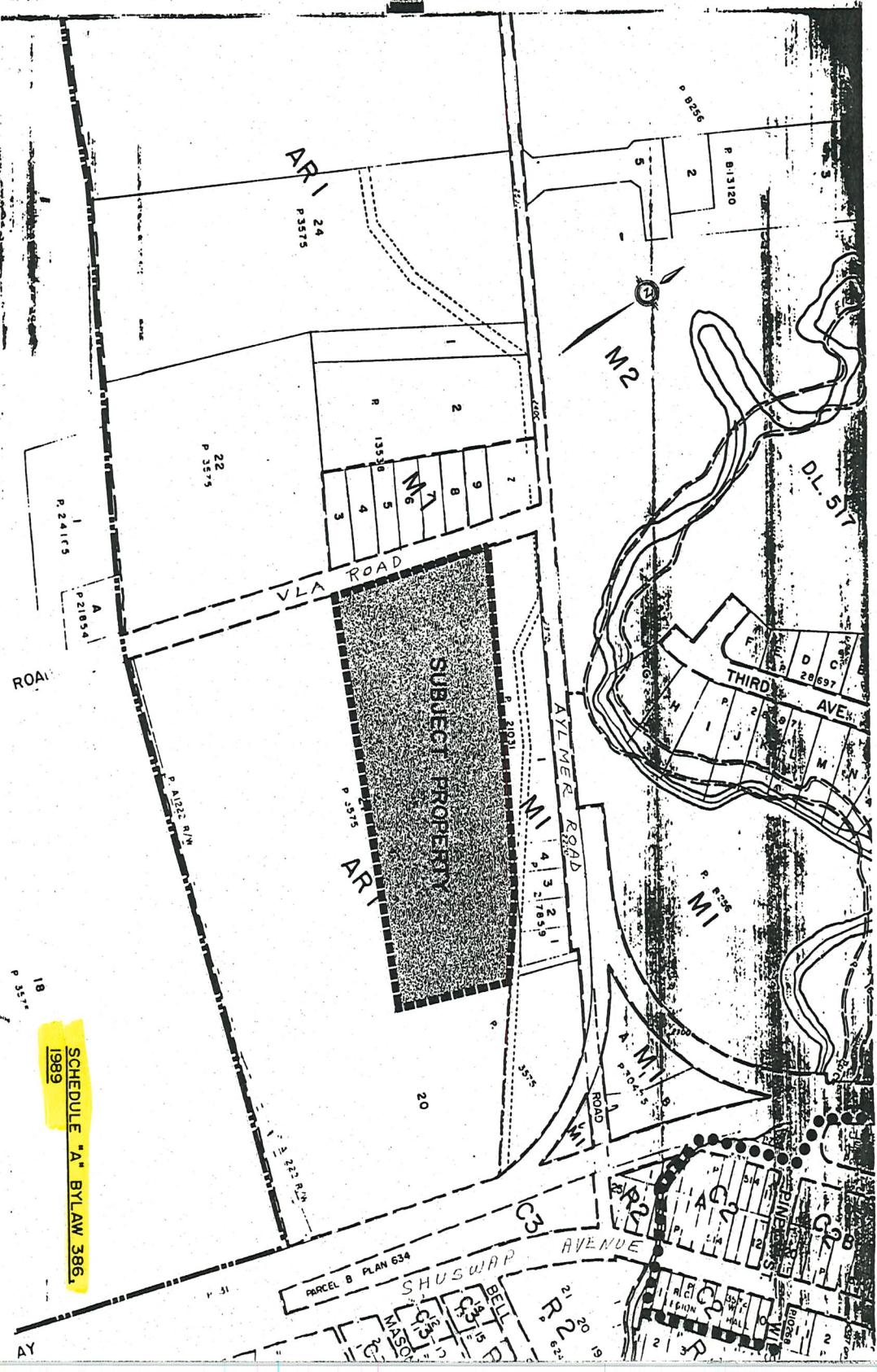
Agnes Sweet
Clerk

Certified a true and correct copy of Village of Chase Bylaw No. 386, 1989.

Agnes Sweet
Clerk

A true copy of By-Law No. 386 registered in the office of the Inspector of Municipalities this 15th day of June, 1989.

[Signature]
Deputy Inspector of Municipalities



SCHEDULE "A" BYLAW 386,
1989

AR1 24
P 3575

P 8256

R B13120

M2

DL 57

22
P 3575

2

9

8

7

6

5

4

3

M1

VLA ROAD

SUBJECT PROPERTY

AR1

AZLMEER ROAD

THIRD AVE

28697

M1

M1

M1

4

3

2

1

M1

M1

M1

M1

M1

M1

M1

M1

M1

M1

M1

M1

M1

M1

20

PARCEL B PLAN 634

SHUSWAP AVENUE

AVENUE

20

20

20

20

20

20

20

20

20

ROAD

R 24119

P 21854

18

P 3575

AY