

VILLAGE OF CHASE

BYLAW NO. 461

A BYLAW TO AMEND THE VILLAGE OF CHASE OFFICIAL COMMUNITY PLAN BYLAW NO. 263, 1983 AND AMENDMENTS THERETO

WHEREAS the Village of Chase has an existing Official Community Plan adopted as Village of Chase Community Plan No. 263, 1983;

AND WHEREAS the Village Council deems it desirable, in order to ensure that the Community Plan in place is appropriate for current conditions, that the Official Community Plan be amended;

AND WHEREAS a Public Hearing will be held in accordance with the Provisions of Section 956(1) of the Municipal Act;

NOW THEREFORE the Council of the Village of Chase, in open meeting assembled, enacts as follows;

(1) This Bylaw may be cited for all purposes as the "Village of Chase Official Community Plan Amendment Bylaw No. 461.

(2) That Lots A, B, & C of Plan 27856 as shown on Schedule "A" attached to and forming part of this Bylaw and as shown on map number 4 - "Land use Plan" be amended as follows:-

FROM:- "Shopping Center Commercial"

TO:- "Future Residential"


READ A FIRST time this 24th. day of September 1992.

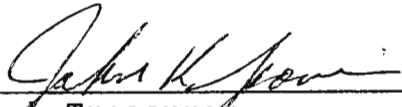
READ A SECOND time this 24th. day of September 1992.

PUBLIC HEARING held this 22nd. day of October 1992.

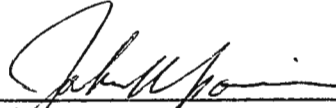
READ A THIRD time this 22nd. day of October 1992.


RECONSIDERED and FINALLY ADOPTED this 12th day of November 1992.

  
\_\_\_\_\_  
Mayor C. Marshall

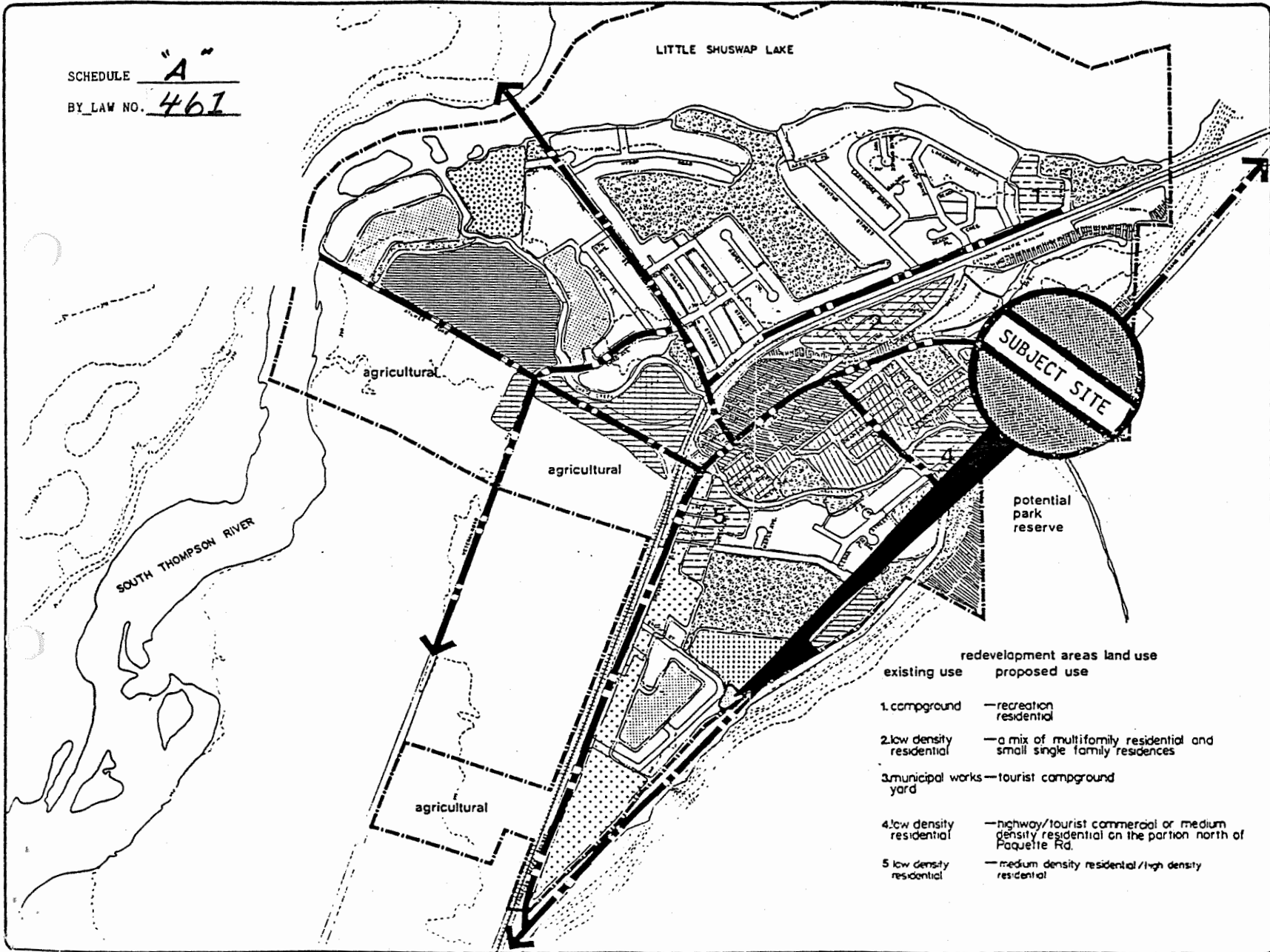
  
\_\_\_\_\_  
Clerk Treasurer  
John K. Spanier

I hereby certify that this is a true copy of Bylaw No. 461 as adopted this 12 day of November, 1992.

  
\_\_\_\_\_  
Clerk Treasurer  
John K. Spanier

A true copy of By-Law No. 461  
registered in the office of the Inspector  
of Municipalities this 31<sup>st</sup> day of  
December 1992.  
  
\_\_\_\_\_  
Deputy Inspector of Municipalities

SCHEDULE "A"  
 BY LAW NO. 461



existing use	proposed use
1. compground	recreation residential
2. low density residential	a mix of multifamily residential and small single family residences
3. municipal works yard	tourist campground
4. low density residential	highway/tourist commercial or medium density residential on the portion north of Paquette Rd.
5. low density residential	medium density residential / high density residential

Village of Chase  
 Official Community Plan

land use plan

- major roads
- steep slopes
- land use categories
  - established residential
  - future residential
  - highway/tourist commercial
  - shopping center commercial
  - light industrial
  - general industrial
  - public use
  - agricultural
- special management areas
  - highway entry zone
  - downtown development area
  - special residential
  - redevelopment areas



prepared for  
 Village of Chase